

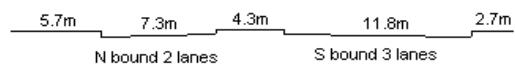
YEAR 2013

CORE STATION 1009

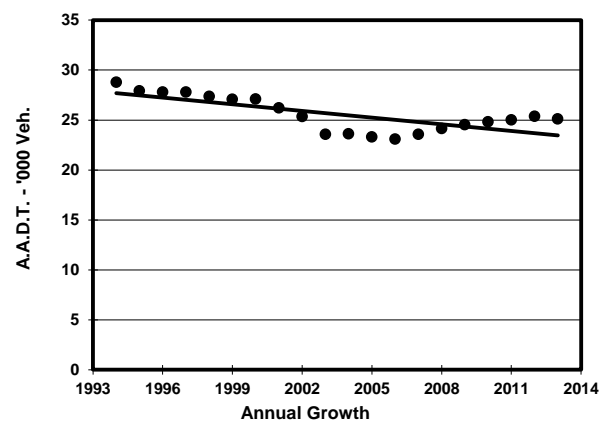
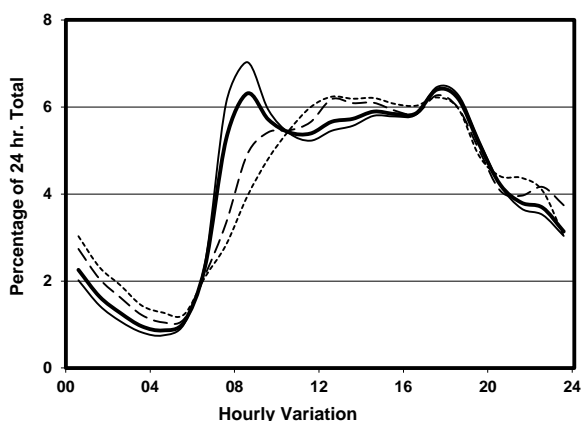
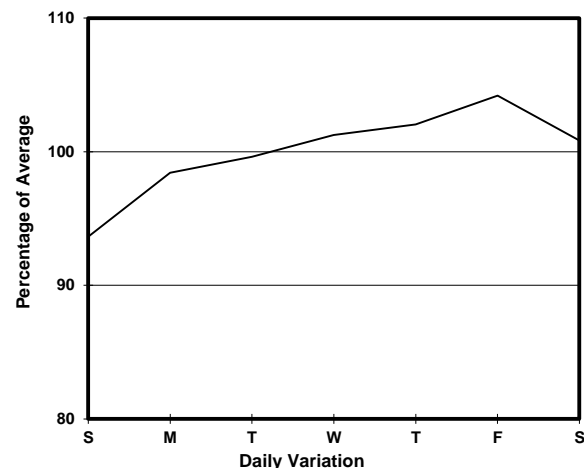
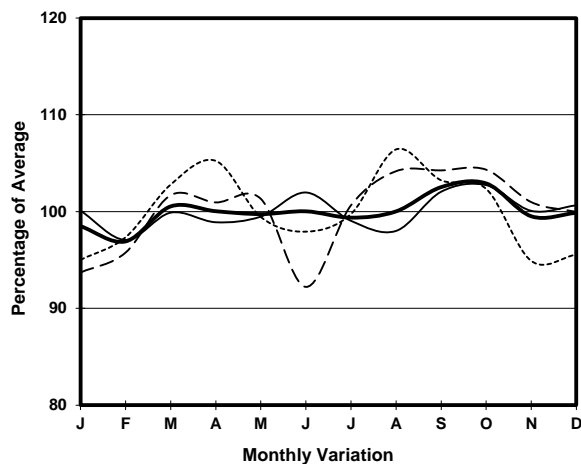
ROAD NETWORK MAJOR

ROAD TYPE PRIMARY DISTRIBUTOR

LINK CHAI WAN RD (from ISLAND EASTERN CORRIDOR  
APPROACH to TAI TAM RD)



## 1. TRAFFIC FLOW VARIATION AND GROWTH



## 2. TRAFFIC CHARACTERISTICS (BY DIRECTION)

Parameter	All - Day	Mon. - Fri.	Sat.	Sun.
<b>SOUTH BOUND</b>				
A.A.D.T.	12670	12830	12900	11970
R 12 / 24 - %	67.2	68.2	65.1	63.9
R 16 / 24 - %	85.2	86.3	82.9	82.1
AM Peak Hour	0800-0900	0800-0900	0900-1000	0900-1000
One-way flow at AM peak hour	780	870	700	570
T - % (AM)	-	8.2	-	-
PM Peak Hour	1800-1900	1800-1900	1700-1800	1600-1700
One-way flow at PM peak hour	720	740	740	680
T - % (PM)	-	9	-	-
Prop.of commercial vehicles - 16 hr.	-	11.8	-	-
<b>NORTH BOUND</b>				
A.A.D.T.	12450	12660	12510	11630
R 12 / 24 - %	72.2	73.6	69.3	68.2
R 16 / 24 - %	87.8	88.6	85.9	85.4
AM Peak Hour	0800-0900	0800-0900	0900-1000	0900-1000
One-way flow at AM peak hour	800	920	680	560
T - % (AM)	-	13.5	-	-
PM Peak Hour	1700-1800	1700-1800	1700-1800	1700-1800
One-way flow at PM peak hour	930	970	850	800
T - % (PM)	-	8.7	-	-
Prop.of commercial vehicles - 16 hr.	-	12.4	-	-

## 3. OTHER INFORMATION AND COMMENT

**4. Vehicle classification and occupancy - Monday to Friday**

Time		Class of vehicle									
		Motor Cycle	Private Car	Taxi	Private LB	PLB	Goods veh.		Non Fr. Bus	Fr. Bus	
							Light	M & H		SD	DD
0700-0800	Pro	6.3	32.5	26.2	2.1	10.5	5.9	0.4	4.5	0.3	11.3
	Ocp	1.2	1.4	1.9	4.0	13.3	1.2	2.0	20.2	23.3	49.5
0800-0900 Peak hour	Pro	3.1	50.0	21.7	2.6	6.4	5.2	0.5	2.6	0.3	7.5
	Ocp	1.1	1.3	2.2	5.8	15.4	1.6	1.5	5.4	38.2	48.0
0900-1000	Pro	1.9	42.1	24.6	1.7	9.5	9.3	0.5	1.7	0.2	8.5
	Ocp	1.0	1.2	2.1	4.3	10.8	1.8	1.0	7.0	12.5	25.1
1000-1100	Pro	2.1	35.5	22.8	3.6	8.3	16.0	0.6	1.5	0.1	9.6
	Ocp	1.0	1.6	2.2	3.8	8.3	1.6	2.0	12.6	16.0	22.5
1100-1200	Pro	1.3	33.6	24.3	2.3	7.7	16.7	2.0	2.0	0.3	9.7
	Ocp	1.0	1.4	2.2	2.0	10.9	1.4	1.2	3.7	17.8	24.2
1200-1300	Pro	1.9	36.1	25.3	2.2	11.4	10.8	0.9	2.5	0.2	8.9
	Ocp	1.2	1.6	2.4	2.1	7.8	1.6	1.7	6.8	13.5	19.3
1300-1400	Pro	3.1	33.9	27.0	2.3	11.9	9.4	1.1	2.0	0.4	8.8
	Ocp	1.0	1.5	2.0	2.3	9.8	1.5	1.5	7.6	16.3	19.2
1400-1500	Pro	2.7	35.2	26.0	2.2	8.9	14.6	1.1	1.1	0.1	8.1
	Ocp	1.1	1.5	2.1	4.6	8.6	1.6	1.8	1.3	15.5	20.5
1500-1600	Pro	3.1	33.6	28.0	4.2	8.5	10.5	1.4	2.3	0.3	8.2
	Ocp	1.1	1.5	2.1	3.5	10.5	1.7	2.0	13.8	21.5	27.8
1600-1700	Pro	4.1	35.9	23.7	2.9	8.1	10.3	0.5	6.2	0.2	8.1
	Ocp	1.1	1.6	2.1	6.1	10.4	1.9	1.0	16.7	19.7	27.5
1700-1800	Pro	5.5	40.7	26.8	1.7	8.6	6.9	0.2	1.2	0.2	8.1
	Ocp	1.1	1.7	2.1	3.7	12.2	1.7	1.0	10.0	26.5	44.4
1800-1900	Pro	3.3	52.0	19.5	1.4	10.1	4.0	0.9	0.7	0.2	8.0
	Ocp	1.1	1.5	2.1	2.2	12.6	1.6	2.0	11.7	23.7	44.1
1900-2000	Pro	3.4	49.5	21.3	0.0	10.5	4.6	0.6	0.9	0.4	8.9
	Ocp	1.1	1.5	2.1	0.0	11.3	1.5	2.0	8.3	16.8	34.2
2000-2100	Pro	2.5	36.8	33.2	0.0	11.1	3.6	0.4	0.4	0.4	11.6
	Ocp	1.3	1.5	2.0	0.0	11.0	1.5	1.0	1.0	13.8	26.8
2100-2200	Pro	2.9	43.4	32.1	0.7	6.9	1.8	0.4	0.4	0.4	11.0
	Ocp	1.5	1.4	2.1	3.5	7.1	2.4	1.0	40.0	8.5	24.1
2200-2300	Pro	3.7	36.0	32.7	0.5	8.9	3.3	0.0	0.5	0.6	13.9
	Ocp	1.4	1.5	1.7	1.0	7.6	2.6	0.0	1.0	13.0	29.0
16 hours	Pro	3.2	39.7	25.5	2.0	9.2	8.4	0.7	2.0	0.3	9.1
	Ocp	1.1	1.5	2.1	3.8	10.6	1.6	1.6	11.6	18.8	30.6

**Legend**

- Pro.** Proportion of vehicles in % (Sum may not add up to 100% due to figure rounding)  
**Ocp.** Average occupancy of vehicles  
**M&H** Medium and Heavy